

User Manual Mandala VN Star



Please read the manual before using the tools.

Version 2

Table of Contents

1	General Notes.....	2
1.1	Product Feature and Intend Use	2
1.2	Warning	2
1.3	Warranty	3
1.4	Precautions	3
1.5	Maintenance	4
1.6	Product Include	5
2	Technical Data	6
2.1	Specifications	6
2.2	Overview and Function.....	7
3.	Installation and Operation Instruction	9
3.1	Setup	9
3.2	Crystal Holder	11
2.3	Photoporation Crystal Bead.....	12
3	Fault Diagnosis.....	17



1 General Notes

1.1 Product Feature and Intend Use

Thank you for using Light Mandalas Product. Mandala VN Star has been in good condition before leaving factory.

Mandala VN Star interacting directly with both the higher and lower ranges of the Auric field spectrum. Operates in the ranges of Near Infrared below the visible red where our heat signatures reside and Violet, the highest vibration of the visible light where the main auric field begins. Harmonizes and re-establishes the balance of the dense body.

The new built-in photon scalar wave generator - Energy Information Transfer (EIT) makes Mandala VN Star one of the most powerful Light Mandala product as well. The photon emitted by the scalar wave generator is directly transformed into a four-dimensional space. Within these processes, it helps people absorb photons faster and more efficiently than before.

It's suitable for relaxation & wellness studios, health retreats and personal meditation spaces.

1.2 Warning

Pay close attention to each safety REMARK and WARNING statement in the manual. This manual contains important laser system safety and operation information.

Read and understand all instructions prior to powering on laser unit the first time, to avoid laser eye injury and to avoid breaking the law. Lasers can be hazardous and have unique safety considerations. Permanent eye injury and blindness is possible if lasers are used incorrectly.

User should follow this manual to operate the product and make sure that everything is clear on all laser safety and product operation information before powering it on. Any wrong operating will make this unit out of warranty

This product is in perfect condition before delivery, please check all accessory when unpacking the unit.

Do not use in cases of: Epilepsy, the flashing light may trigger a seizure Pregnancy
Never look directly at light beam or its reflections. Follow standard laser eye protection.

1.3 Warranty

Each single product passes through a quality process. Nevertheless, if failures occur, contact customer service at once. The product is under 12 months (1 year) warranty effectively according to the delivery date stated on the warranty card.

The warranty does not apply to damages which result from misuse or neglect. The warranty also expires if you dismantle the product or fail to provide the warranty card. The manufacturer is not liable for consequential damage or in case of a non-intended use of the product.

If a failure occurs during the warranty period, the product will be replaced or repaired. The manufacturer reserves the right to exchange components of the product instead of repairing it. If the failure results from misuse or neglect, the user must pay for all costs that may occur. The freight cost and other costs will depend on which Term & Conditions criteria the product falls into. **Import tax and Customs clearance duty cost is not included in the term of warranty.** In that case, you may ask for an estimated cost beforehand.

1.4 Precautions

1. Please check Mandala VN Star for damage during shipping. Do not use the device if any damage is discovered. If the device is damaged, please contact the dealer or Light Mandalas immediately.
2. Please Confirm the product you have received are in correct voltage and frequency for your country.
3. Do not disassemble or modify the device in any case.
4. Do not use the device outdoors when rains.
5. Place the device in a well-ventilated area.
6. Keep dry and avoid excessive humidity, heat, or dust.
7. Confirm fans are running properly and unobstructed.
8. Do not place the device closer than 2 feet from combustible objects.

9. Do not look directly into the tool to avoid harm eyes.
10. Disconnect power when cleaning the tool or not in use.

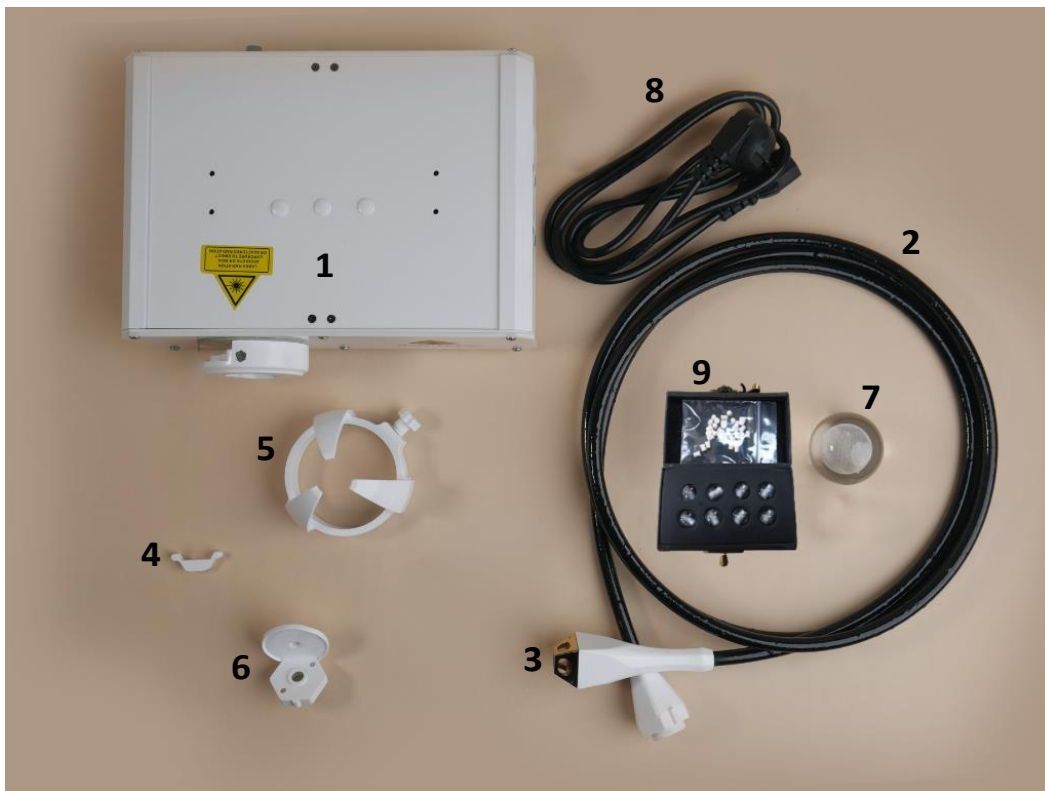
1.5 Maintenance

1. Clean with soft cloth, humid tissue moistened with water or a water-based glass cleaner.
2. Clean the cooling fans with cotton swap when they are covered with dust.
3. Protect the Laser Output Head with Light Wand Cable plug in.
4. To guarantee the fixture works properly, it's essential to keep it clean.



1.6 Product Include

1. Mandala VN Star	x1
2. Optical Cable	x1
3. Pyramid Crystal Holder	x1
4. Support Piece	x1
5. Crystal Holder	x1
6. L-Shape Holder	x1
7. Harmonistic Universe Sphere 50 mm	x1
8. AC power cord	x1
9. Photoporation Crystal Bead Set	x1



2 Technical Data

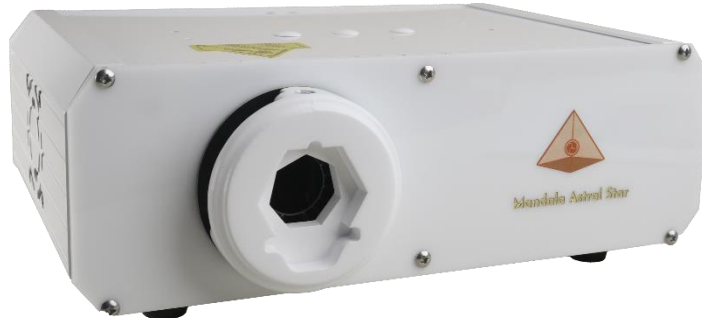
2.1 Specifications

Specifications	Details
Input Voltage:	AC 100-240 V 50-60 Hz
Power:	Max. 50W
Laser Power:	Mandala VN Star (Class 3B)
Violet:	200mW 405nm
Scanning speed:	0-30kpps
Laser Pattern	Unlimited Patterns
Cooling System:	Fan Cooling
Operation temperature:	Indoor (10 — 35 °C)
Case Color:	Black
Case Material:	Aluminum and Acrylic black
Machine size:	260 x 180 x 90 mm
Gross Weight:	3kg

LIGHT MANDALAS

2.2 Overview and Function

Front View and Top View



Side View



Cooling Fan

Back View



No.	Description	Function
1.	Power Switch	Switch ON and OFF the device
2.	Power Supply Socket	Power Input socket build in fuse and spare fuse
3.	Sensitivity Knob	Pattern size adjustment - from 5% to 100 % clockwise
4.	Laser Light Switch	Switch ON and OFF the laser.
5.	Energy Information Transfer (EIT)/ Scalar Generator Switch	Switch ON and OFF the EIT function
6.	Display Screen	Display Bluetooth connection status of the device and smartphone/tablet

3. Installation and Operation Instruction

3.1 Setup

1. Before starting to use the device, ensure the Laser Light Switch is turned OFF to prevent any damage to your eyes from laser light.



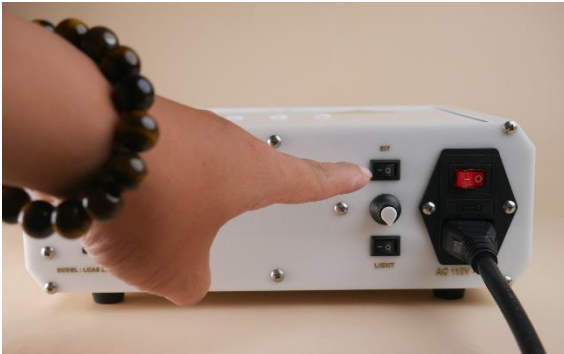
2. Plug in the power cord. Use only AC 100-240 V, 50-60 Hz.



3. Turn ON the Power Switch.



4. Turn ON Scalar Generator Switch



5. Turn ON Laser Light Switch to check laser light. Please be careful with your eyes.



6. Tune the Sensitivity Knob to adjust the size of laser pattern.



- **Recommend tune to 1 or 2 O'clock.**
- **Tuning too low will cause burn on CPL filter or crystal which placed in front as the laser is too concentrated, therefore the output power is too intense.**
- **Tuning too high will cause damage to the laser module.**

7. The device should be in Standby Mode now and playing with some default patterns. Make sure the display screen is showing “AL” as it means the device is ready to pair with APP. When the device is Bluetooth connected/paired with tablet app (Mandala Star), it will show “APP”.



STANBY MODE



Bluetooth connected/paired with APP

3.2 Crystal Holder

1. Turn OFF the laser.



2. Place crystal spere into the Holder. Clench both Crystal Holder and Harmonistic Sphere, then install the laser output head.



3. Lock the Crystal Holder by turning the screw.



Please DON'T over screw as it will cause the crystal holder to crack.

4. Turn ON the Laser Light Switch to release the laser light.

2.3 Photoporation Crystal Bead

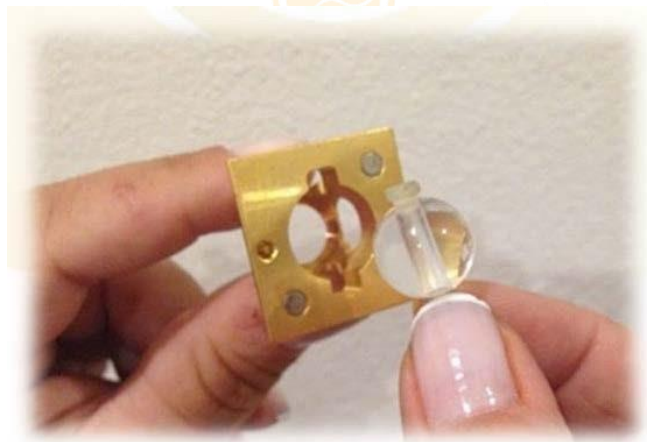
User can put remedy substance (flower essence, herbal tincture etc.) into photoporation crystal bead and use it together with Light Wand. In such a way, user not only can heal themselves with the laser pattern healing frequency, but also the remedy substance healing frequency as well.



1. Use a dropper or syringe to put several drops of the remedy substance into the Photoporation Crystal Bead and seal with silicon caps tightly.



2. Place remedy substance filled Photoporation Crystal Bead into the freezer.
3. When the remedy substance is frozen, place the frozen remedy filled Photoporation Crystal Bead into the Pyramid Crystal Holder.



- **Light Wand**

1. Turn OFF the laser.
2. Plug in the Light Wand Cable into the laser output head. Please follow the diagrams below to ensure the cable is installed correctly.

- Install the Support Piece to the laser output head.



- Align the mark of the cable head to the laser output head.



3. Put the crystal bead into the Pyramid Crystal Holder.

4. Install the Pyramid Crystal Holder onto the cable.



5. Turn ON Laser Light Switch to release the laser. Tune the Sensitivity Knob to adjust the brightness of light wand.



To receive complete pattern energy, it's recommended to adjust sensitivity knob to 9 or 10 o'clock.

- *Adjust too over will cause the projected pattern to be too big which unable the pattern to fit in completely into light wand.*

- **L-Shape Holder**


1. Install the L-Shape Holder to the laser output head.



2. Users can put the small size mineral or crystal on the holder or install the Pyramid Crystal Holder with crystal bead inside onto it.



3 Fault Diagnosis

Failures	Remedies
No power	<ul style="list-style-type: none"> ● Check the input voltage. Does it match the required input voltage on the specification? ● Check On/Off switch if it is fully turned ON. ● Check the cable female socket. Is it fully inserted into the device power socket? ● Check power fuse condition. <ul style="list-style-type: none"> ○ Unplug the power cord. 
No laser/pattern output	<ul style="list-style-type: none"> ● Check if the Laser Light Switch is turn ON ● Tune the Sensitivity Knob to adjust the pattern size. ● Check the Bluetooth connection of the device and tablet. The display screen of the device will show “APP” if it’s connected to the tablet.

Disclaimer

All content found on the Light-mandalas.com Website, Facebook Page, YouTube, including: text, images, video, audio, or other formats are intended for informational, educational and research purposes only and neither Light Mandalas Co. Ltd. nor the publishers of this content take responsibility for possible health consequences of any person or persons reading or following the information in this educational content and is not intended to be a substitute for professional medical advice, diagnosis, treatment or cure. Always seek the advice of your physician or other qualified health professionals with any questions you may have regarding a medical condition.

“No claims other than stress detection and stress reduction may be made”

Light Mandalas products are to be used as a Heart Rate Variability Biofeedback system and Light, Color and Sound therapy, designed for stress detection and stress reduction only. The devices do not evaluate any issue other than stress. Stress can come from many sources; this system uses light and color and sound therapies to reduce stress. Remember, there has never been any reported side effects using light, color and sound therapy anywhere in the world and throughout time.

Notes on the practices of low-level laser therapy (LLLT) and Biofeedback

Low-level laser therapy (LLLT) is considered investigational by the FDA, and no medical claims of cures are permitted in the US; at this time however, low-level lasers are defined within the scope of complimentary medical practices such as physiotherapy, aesthetic, Traditional Chinese Medicine and acupuncture, etc.

The FDA does not regulate Bio resonance tools but they do regulate biofeedback tools and some Bio resonance tools are registered under this category.

*It is a legal requirement at this time that the user does not make any medical claims of diagnosis or cure.

Precaution

Light Mandalas products are working on energetic level. The standard benefit is energy clearance. During the process, your body and mind can be uncomfortable. The symptoms associated with overly rapid clearance of toxins. If those detox symptoms are too strong, you may need to stop using the products. You have to allow the clearance or detox to proceed and you can start to try the products afterwards. However, if the issues still remain the same, it may need to be completely discontinued for your own safety

Shall there be any inquiry, please contact us for further support.

Light Mandalas Co., Ltd. (Thailand Headquarters):

- **Light Mandalas Website:** www.light-mandalas.com
- **Official:** info@light-mandalas.com
- **Instagram:** [@mandalawave9](https://www.instagram.com/mandalawave9)
- **YouTube Channel:** Light Mandalas Official
- **Technical Support Email:** cservice@light-mandalas.com

Local agents contacts:

- **Japan:** japan@light-mandalas.com
- **Taiwan:** lovelight777888@gmail.com
- **Indonesia:** lightseed2020bali@gmail.com
- **West Malaysia:** lightworker@healingtech.org
- **East Malaysia:** malaysia@light-mandalas.com
- **Hungary:** horesnyibela@light-mandalas.com
- **Switzerland, Germany, Austria, and the Netherlands:** info@light-mandalas.ch
- **France, Spain:** france-spain@light-mandalas.com
- **USA:** usa@light-mandalas.com
- **New Zealand, Australia:** tachyonhealing.nz@gmail.com