

Mandala Star App User Manual

Mandala Resonator Meridian



Please read the manual before using the tools.

Version 2.0

Table of Contents

1	<i>Android Device Requirement</i>	2
2	<i>Mobile Application End-User License Agreement</i>	3
3.	<i>Application Download and Installation</i>	4
4.	<i>Mandala Star Application Main Page Features</i>	7
4.1	<i>Basic Mode and Advance Mode</i>	8
5.	<i>Application Setup</i>	9
5.1	<i>Application Activation</i>	10
5.2	<i>Application Settings</i>	11
2.1.1	<i>Bluetooth Connection Setup:</i>	11
5.2.2	<i>General Setting</i>	12
5.2.3	<i>Mandala Dynamic Scan Setting</i>	13
5.2.4	<i>Light Alchemy Pulsar Setting</i>	13
6.	<i>Mandala Resonator</i>	14
6.1	<i>Basic Program</i>	14
6.2	<i>Advance Preset</i>	15
	Users can manually create/customize their own presets by tab on Create Preset . When the user is done with the preset pattern setup, tap on Confirm to save it.	16
6.3	<i>Public Presets</i>	17
6.4	<i>Upload Program</i>	19
6.5	<i>Meridian Program</i>	20
	<i>Application Reference</i>	21
i.	<i>Program support for symptoms and issues.</i>	21
ii.	<i>Specific time of Application</i>	22
iii.	<i>Chakra Application</i>	23
i.	<i>Application on the time for Maximum Organs Energy</i>	24

1 Android Device Requirement

Mandala Star application can only be operated with **Android mobile phone or tablet.**

Minimum requirement:

Operating System: Android OS
Android version: Android 12 or above
Others: with Bluetooth and WIFI function



2 Mobile Application End-User License Agreement

Please read this Mobile Application End-User License Agreement (“EULA”) carefully before downloading or using the Mandala Star App mobile application (“the application”). This EULA governs your use of the application, which will allow you to access Light Mandalas library and control Light Mandalas tools by your mobile device. Your use of the application indicates your consent to this EULA.

1. **License.** Light Mandalas Co., Ltd. grants you a revocable, non-exclusive, non-transferable, limited license to download, install, and use the application for your personal and internal business purposes strictly in accordance with this EULA.

2. **Your Account.** Your use of the application requires that you have an account with Light Mandalas.

3. **Changes to this EULA.** Light Mandalas reserves the right to modify this EULA. Your continued use of the application after Light Mandalas publishes notice of changes to this EULA indicates your consent to the updated terms.

4. **No Included Maintenance and Support.** Light Mandalas may deploy changes, updates, or enhancements to the application at any time. Light Mandalas may provide maintenance and support for the application but has no obligation whatsoever to furnish such services to you and may terminate such services at any time without notice. You acknowledge that Google has an obligation to furnish any maintenance and/or support services in connection with the application.

5. **Acceptable Use.** You agree that you will not use or encourage others to use the application in a way that could harm or impair others’ use of the Mobile App.

6. **Privacy.** Light Mandalas don’t collect your information from your application. Information inside the application will be private.

7. **No Warranty.** Your use of the application is at your sole risk. The application is provided on an “As Is” and “As Available” basis. Light Mandalas expressly disclaims all warranties of any kind.

8. **Suspension and Termination of the application.** Light Mandalas reserves the right to suspend or terminate your access to the application at any time.

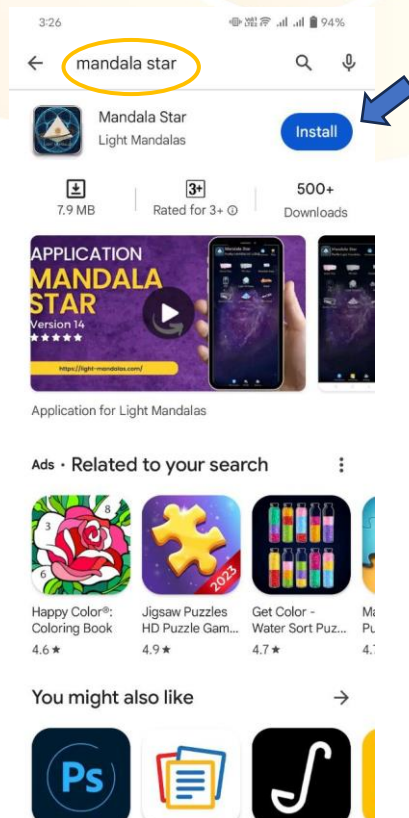
9. **Intellectual Property Rights.** In the event of a third-party claim that the application, or your possession and use of the application, infringes third party’s intellectual property rights, Light Mandalas, will be solely responsible for the investigation, defense, settlement and discharge of any such intellectual property infringement claim.

3. Application Download and Installation

1. Users can download Mandala Star app from **Google Play Store**.

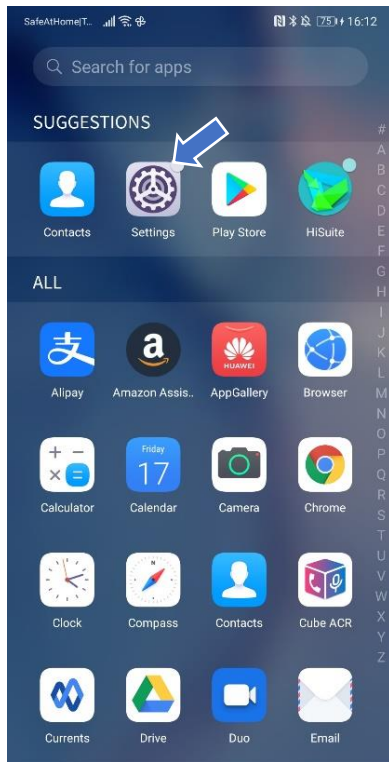


2. In “**Google Play Store**” try to search “**Mandala Star**”, and click to install the APP.

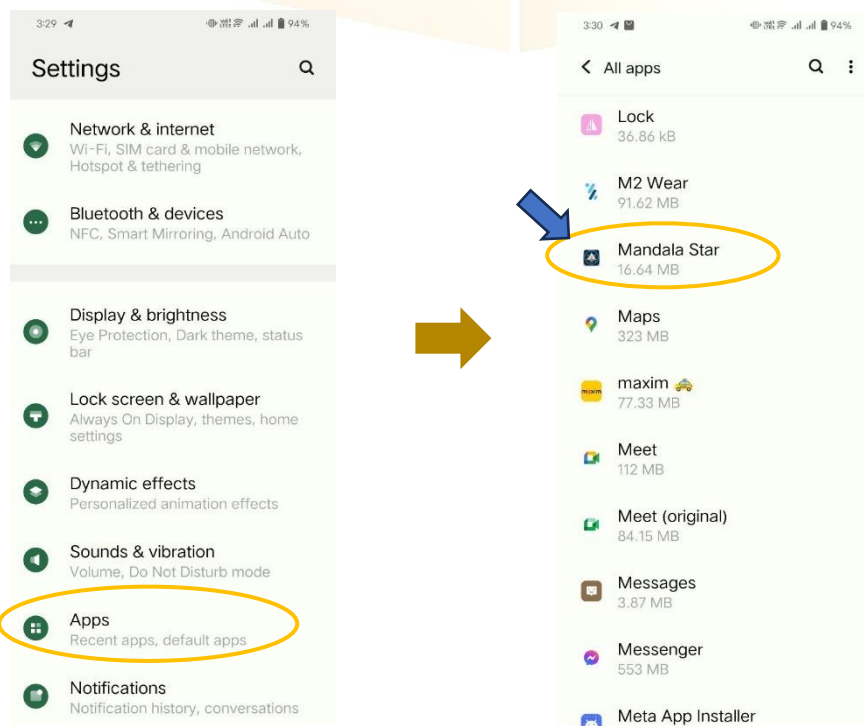


3. Allow permissions for Mandala Star APP

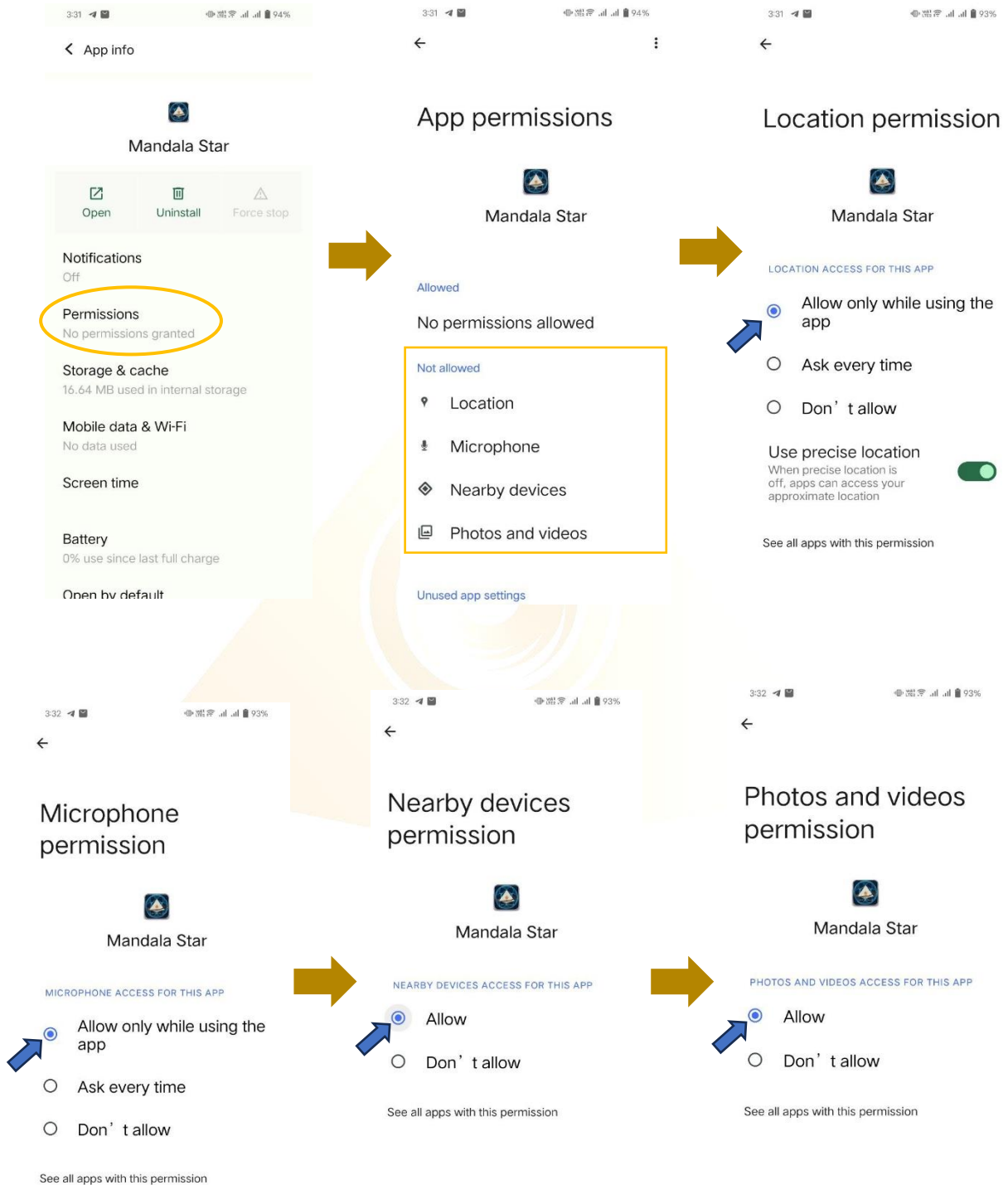
a. Go to Tablet Settings



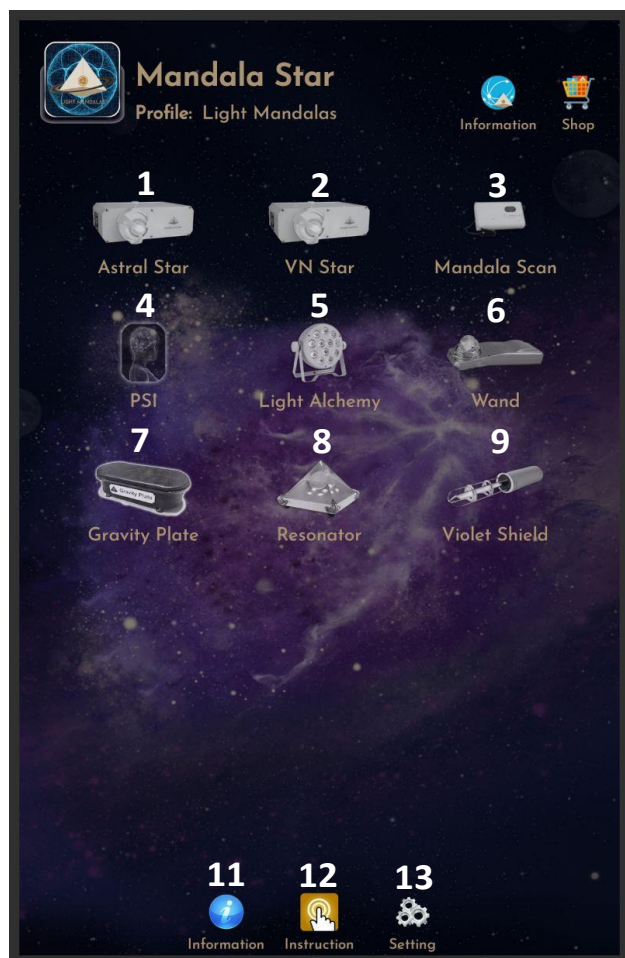
b. Go to "Apps" in the setting.



c. Tap on “Permissions” and click allow permission in each of function.



4. Mandala Star Application Main Page Features



Programs 1 to 9 on Light Mandalas devices correspond to specific functions, allowing users to select the appropriate program for their desired operation.

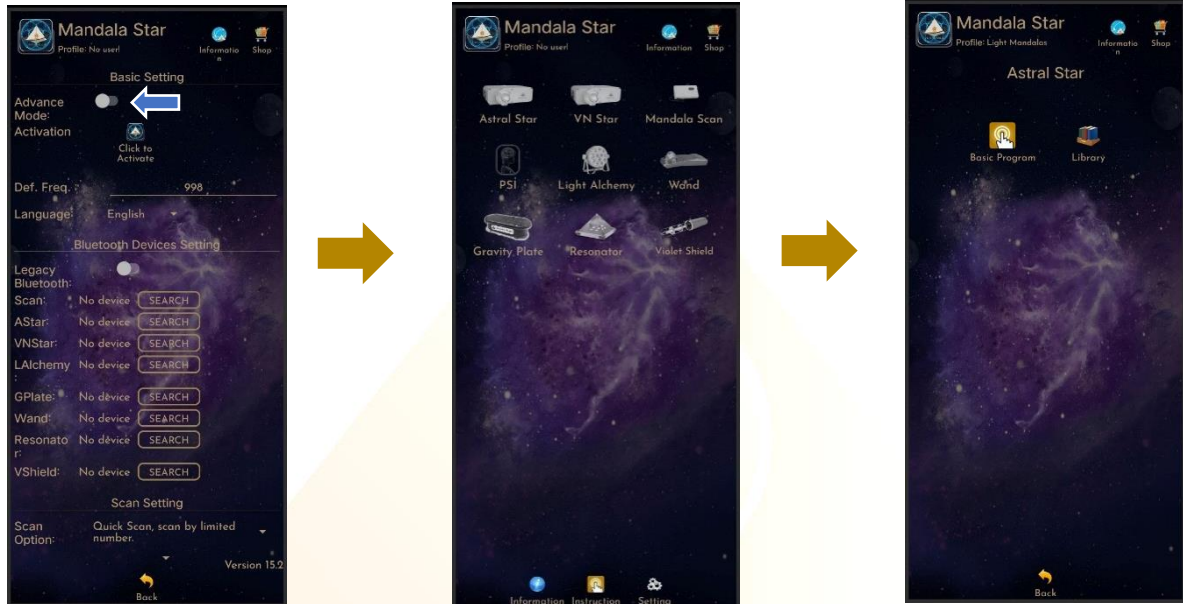
1. Mandala Astral Star
2. Mandala VN Star
3. Mandala Scan
4. Psycho Spiritual Integration – PSI
 - PSI library has to be purchased prior to use this program.
 - Must use with Mandala Scan.
5. Mandala Light Alchemy Pulsar
6. Mandala Wand
7. Gravity Plate
8. Mandala Resonator
9. Mandala Violet Shield

- 11. Information:** Provide the user with the latest application update information.
- 12. Instruction:** Provide video manuals for the user.
- 13. Setting:** Application Setting – Bluetooth Pairing, Mandala Scan Setting, Light Alchemy Setting, Language setting, Database refresh and Activation Code Release

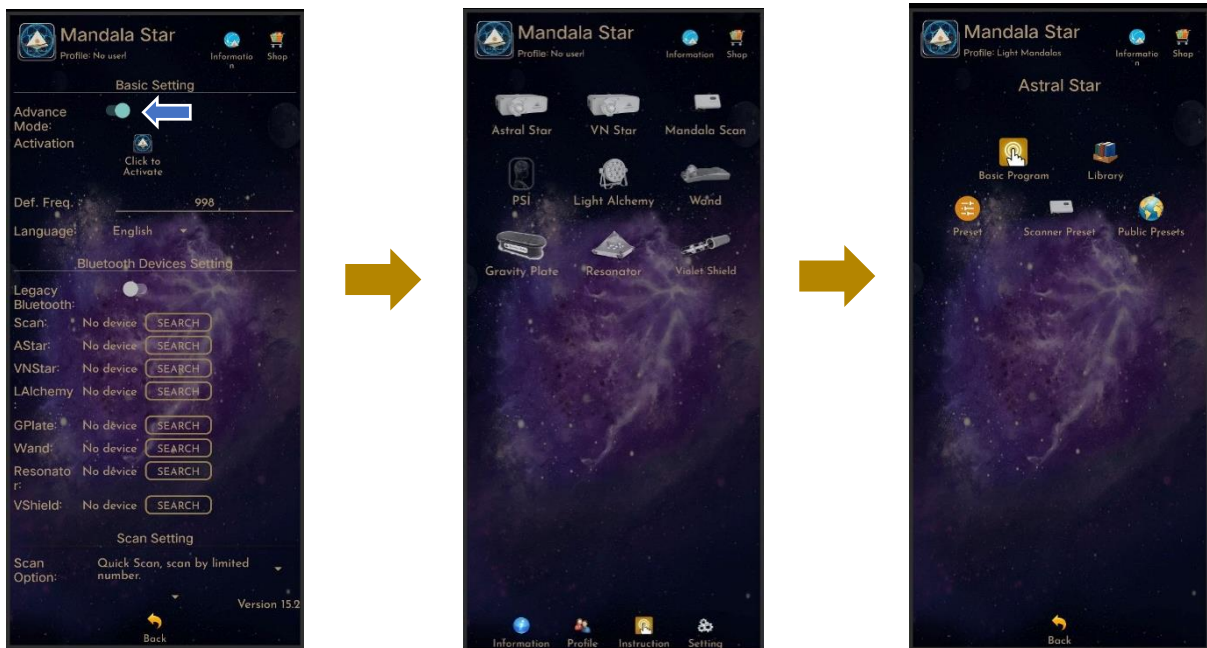
4.1 Basic Mode and Advance Mode

Users can select Basic Mode and Advance Mode from the APP setting. Basic Mode allows the beginner to use the basic programs and enjoys the basic healing. In Advance Mode, users can customize the frequency on their own and enjoys other features with the healing programs.

a. Basic Mode



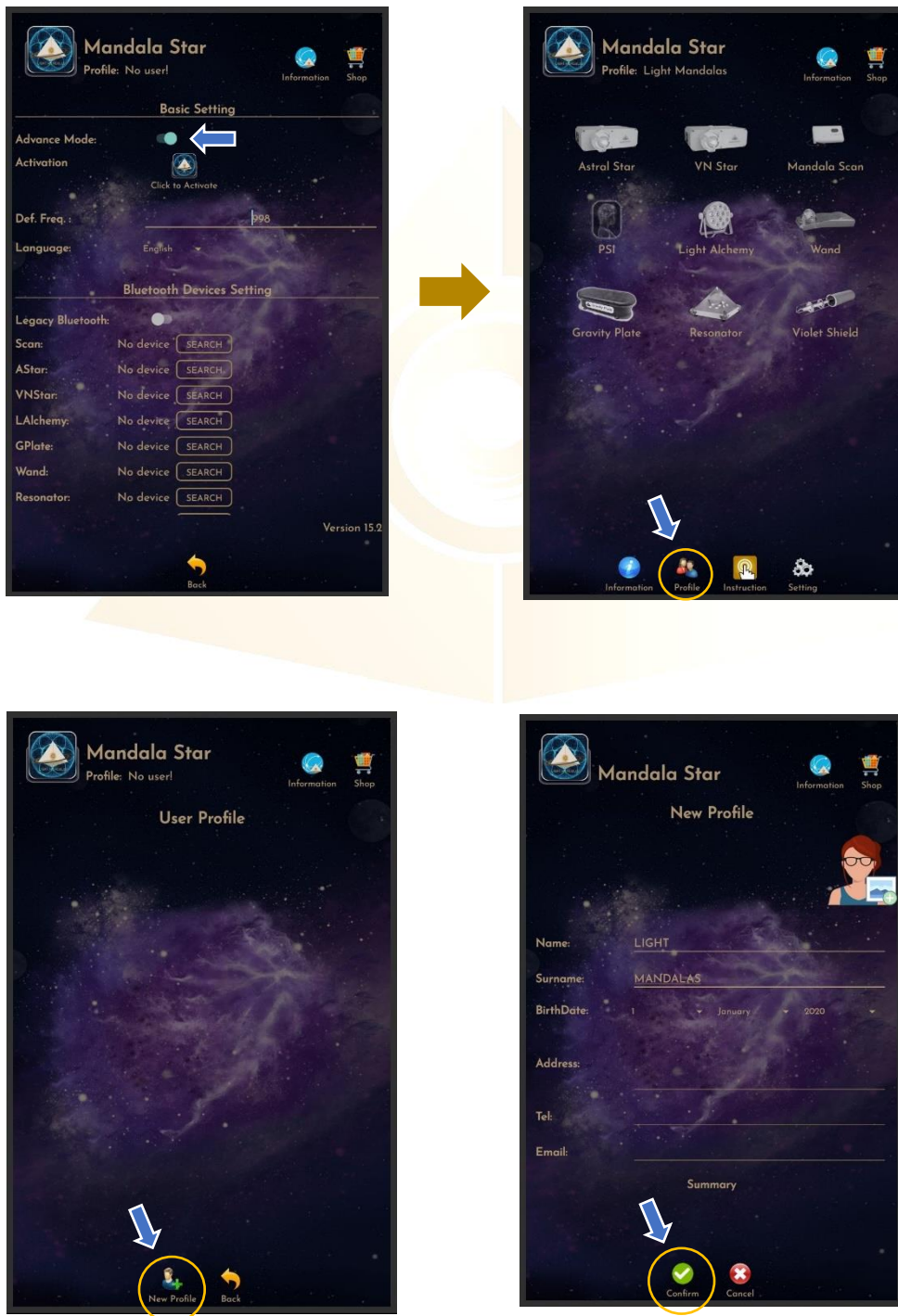
b. Advance Mode



5. Application Setup

Once the user turns on Advance Mode from the APP setting, “User Profile” will prompt up on the Home Page to add new user profile and it can add the picture profile as well. The user’s name will appear on the Home Page.

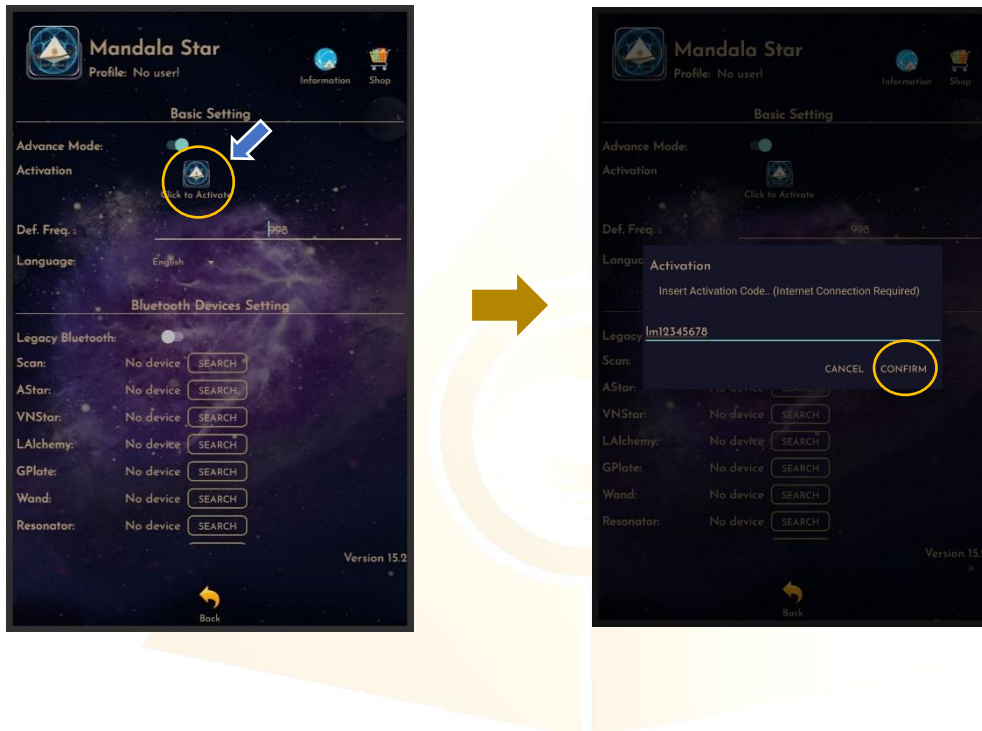
Users can add more another user by tapping on “User Profile” to insert other users’ information.



5.1 Application Activation

Users have to tap on the icon “Click to Activate” to activate the APP and use the programs. Insert the activation code with small letter of “lm” and tap confirm.

****User has to purchase for the libraries and can request activation code from the dealer/local agent.***



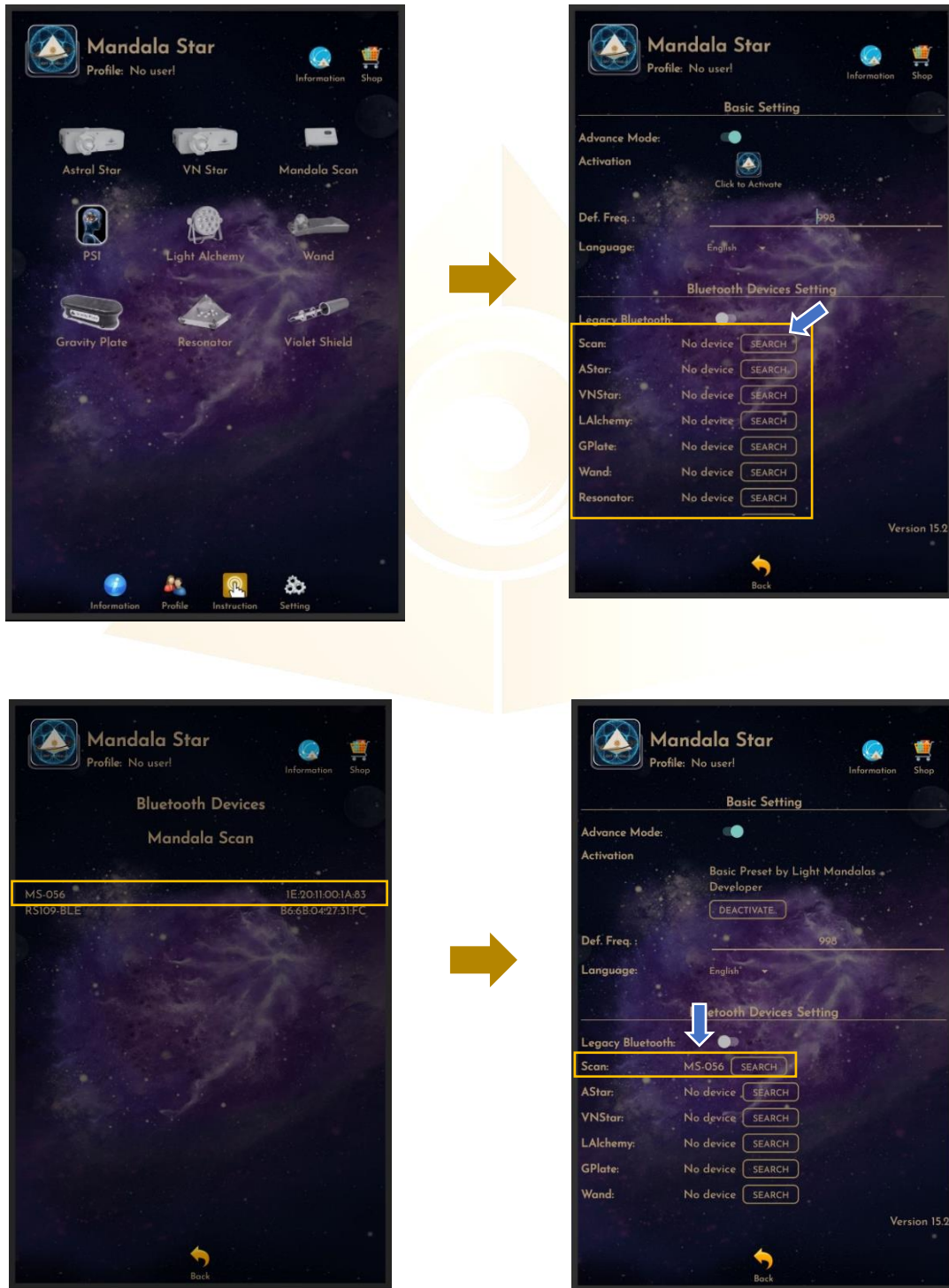
The PSI icon will turn to color if the customer has purchased the PSI library.



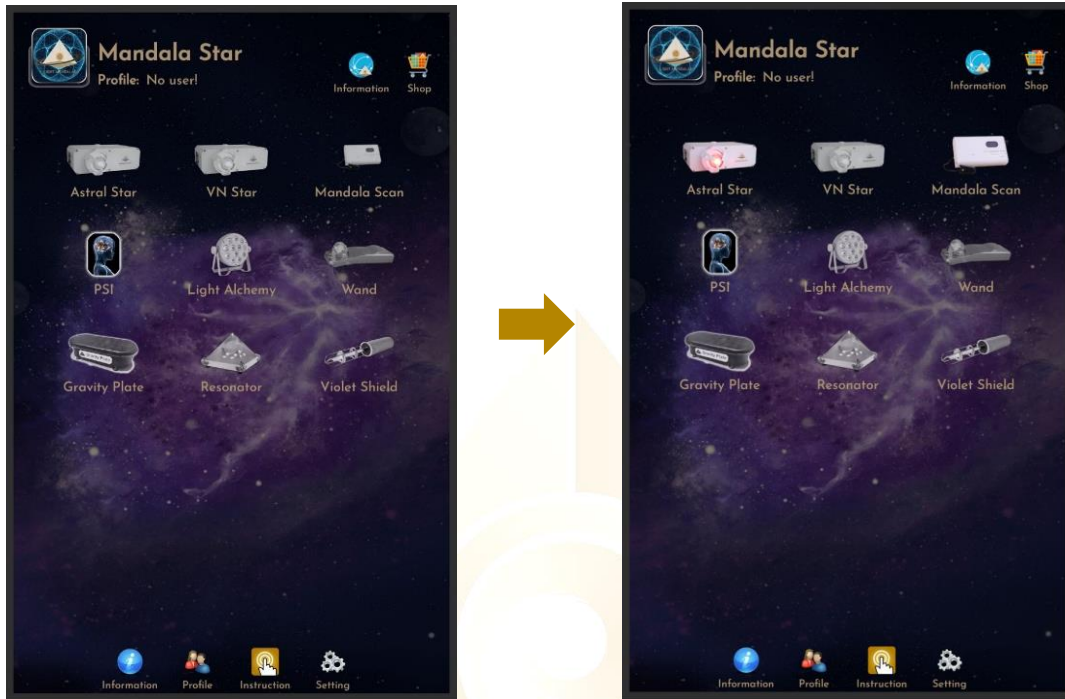
5.2 Application Settings

2.1.1 Bluetooth Connection Setup:

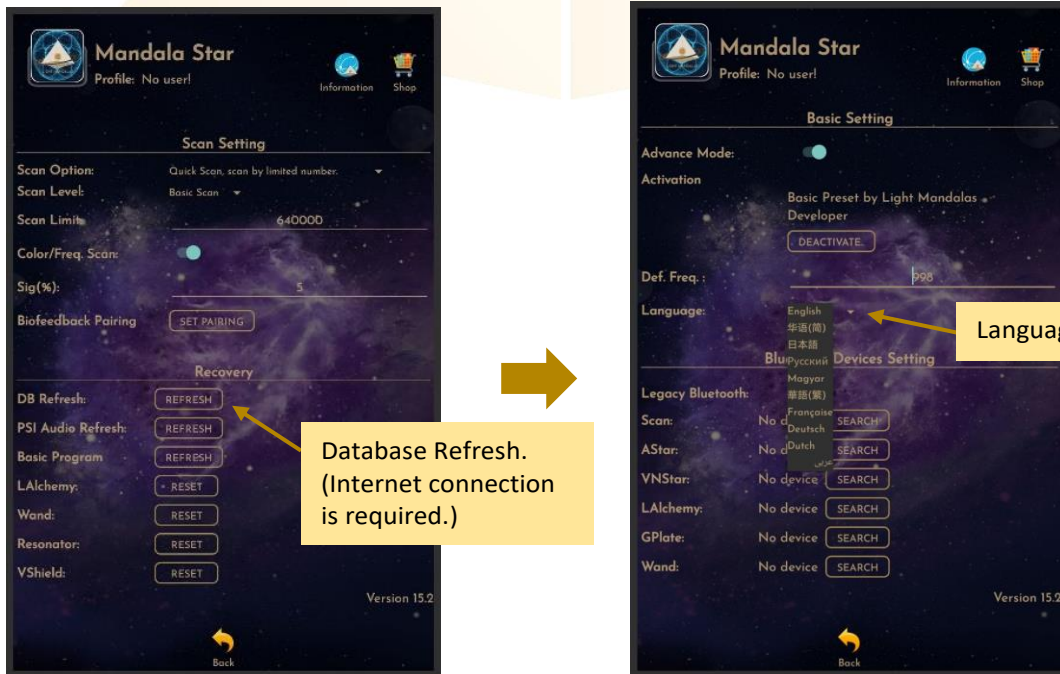
1. Go to the Mandala Star application “**Setting**”, tab on the device which you want to pair with and click “**Search**” to pair Bluetooth with Light Mandalas device.



2. The icon of the device on the Home Page will turn to color when APP is pairing Bluetooth with Light Mandals devices.



5.2.2 General Setting



5.2.3 Mandala Dynamic Scan Setting

Scan Level:

1. Basic Scan: scan from Blue to Green state.
2. Deep Scan: will scan only on green state.

Scan Option:

1. Quick Scan: scan by limited number
2. Advance Scan and Bio Matrix Scan: scan by human body coherence. (Unlimited number of scan)

Color/Freq. Scan:

Color Scan for Astral Star and VN Star:

Turn on: different colors preset scan results.
Turn off: white color preset scan results.

Freq. Scan for Light Alchemy Pulsar:

Turn on: different frequency preset scan results.
Turn off: default frequency preset scan results.

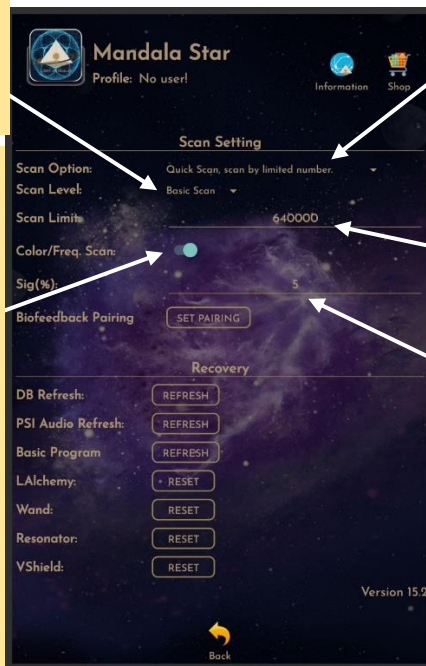
Freq. Scan for Mandala Wand:

Turn on: different color preset and laser scan results.
Turn off: no color preset and all laser ON (FULL) scan results.

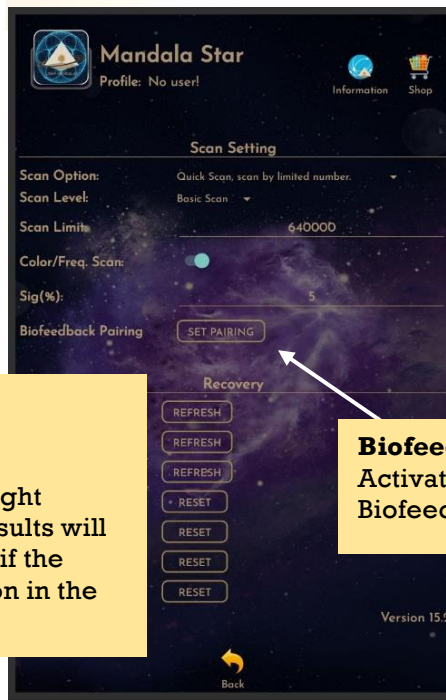
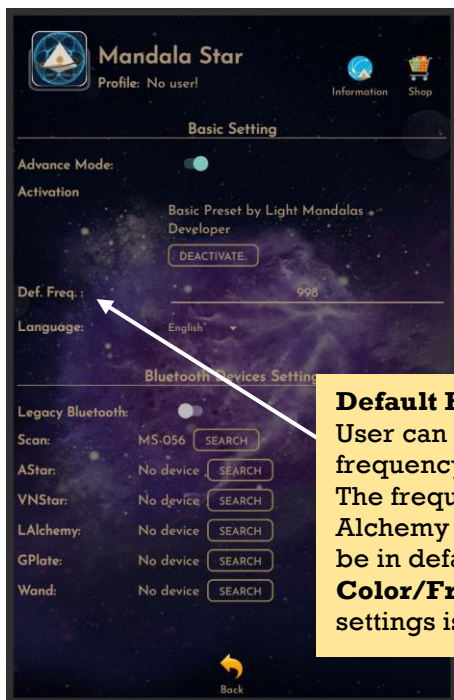
Scan Limit:

Set the scan numbers for Quick Scan.

Sig. (%): the significant of the scan result that focus on.



5.2.4 Light Alchemy Pulsar Setting

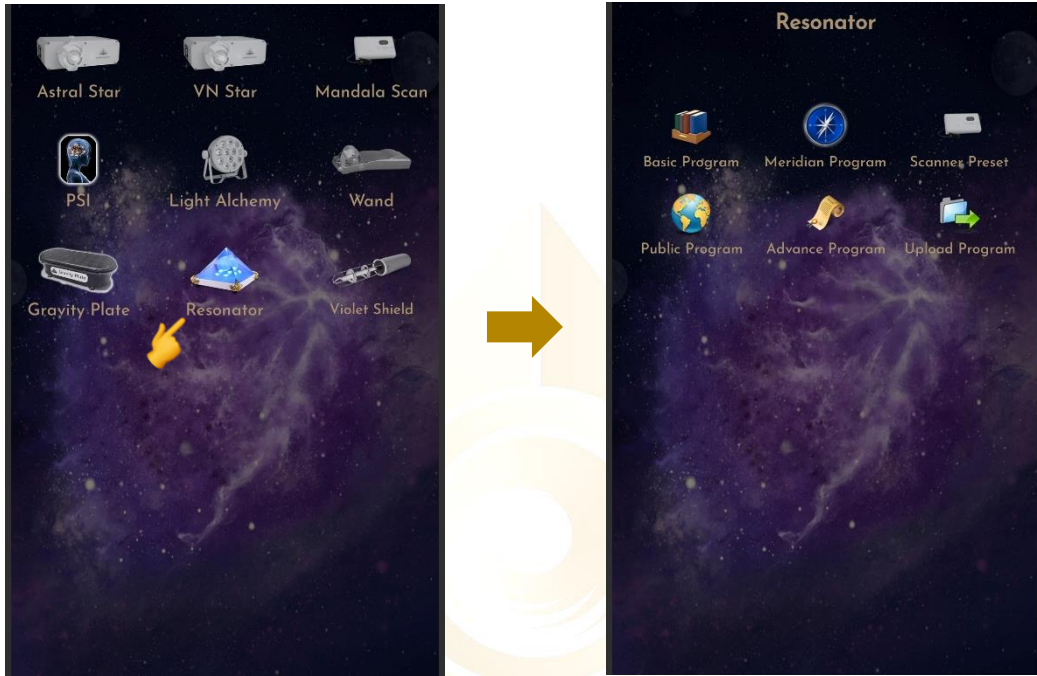


Default Frequency:
User can set the default frequency at here. The frequency for the Light Alchemy Pulsar Scan results will be in default frequency if the **Color/Freq. Scan** option in the settings is unticked.

Biofeedback Pairing:
Activate and deactivate Biofeedback function.

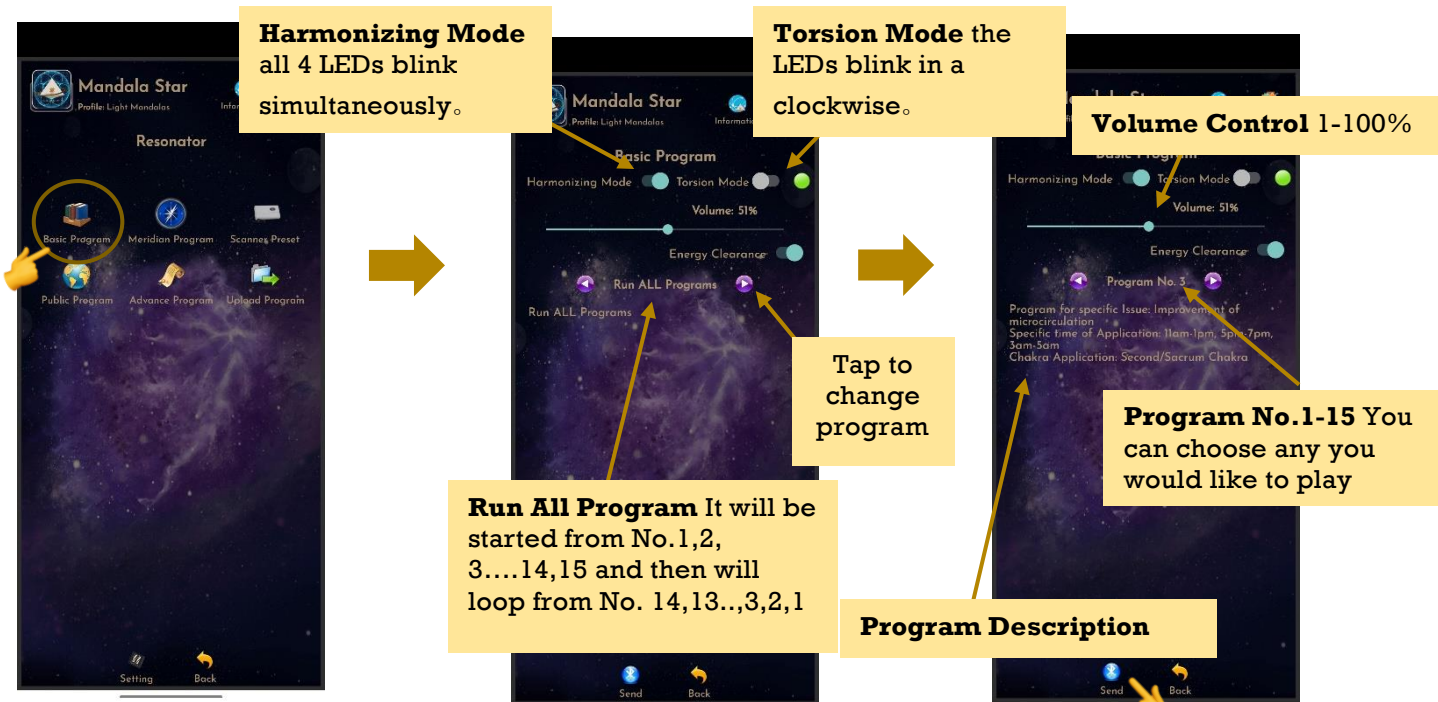
6. Mandala Resonator

Tap on the **Mandala Resonator** icon in the **Mandala Star Application Main Page** then you will go to **Mandala Resonator Home Page**.

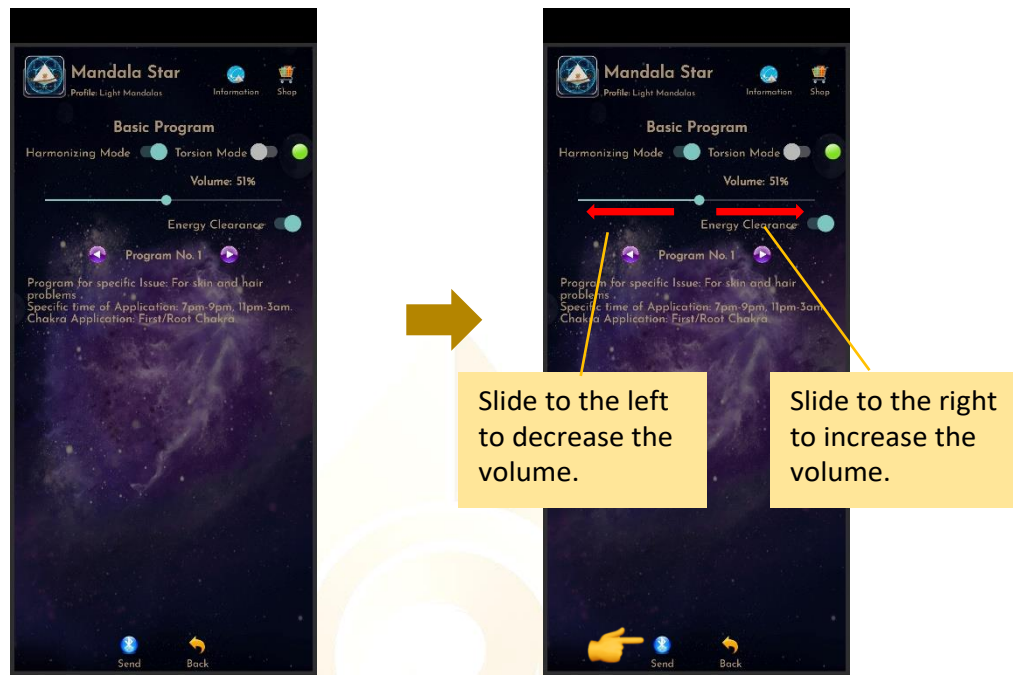


6.1 Basic Program

To play the light directly from **Basic Program**, tap on **Basic Program**, then select **Run All Program** or any **Program No.** and then choose **Harmonizing Mode** or **Torsion Mode**, finally choose **volume control**. After all the program was set, tap on **Send**.

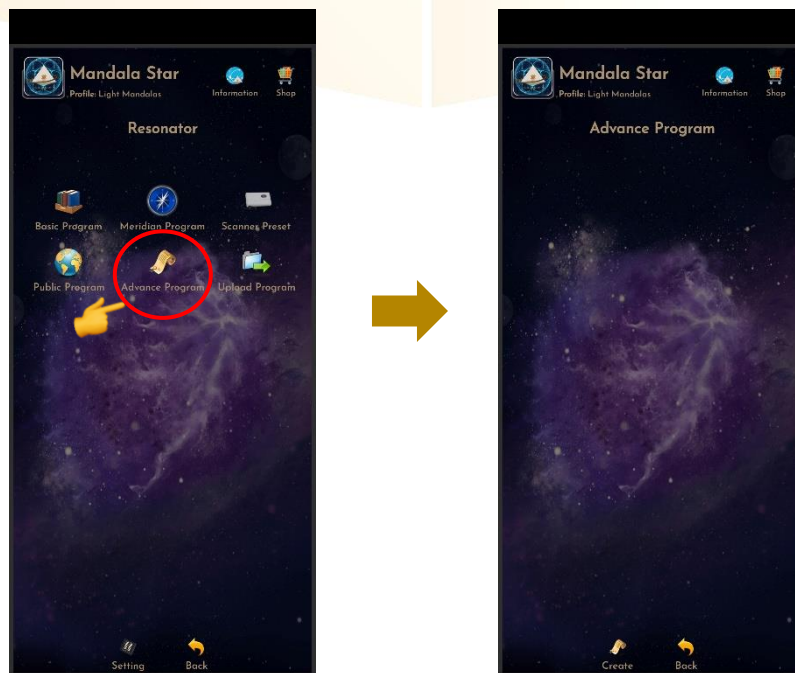


Users can choose the volume as they wish with range 1-100%, and then tap **Send**.

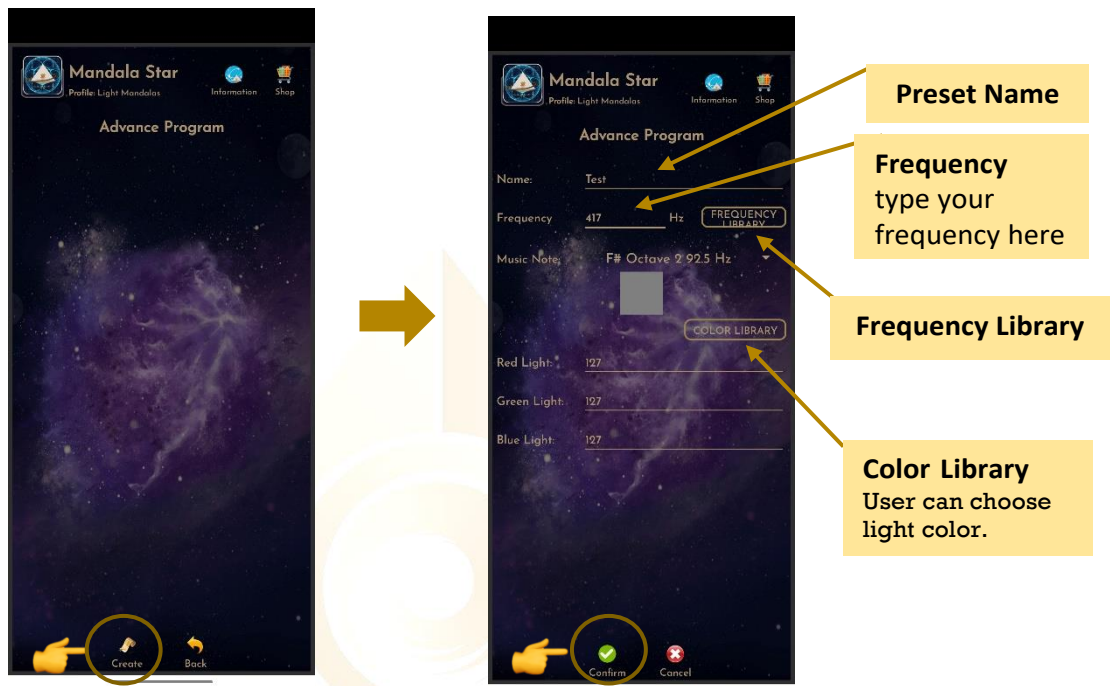


6.2 Advance Preset

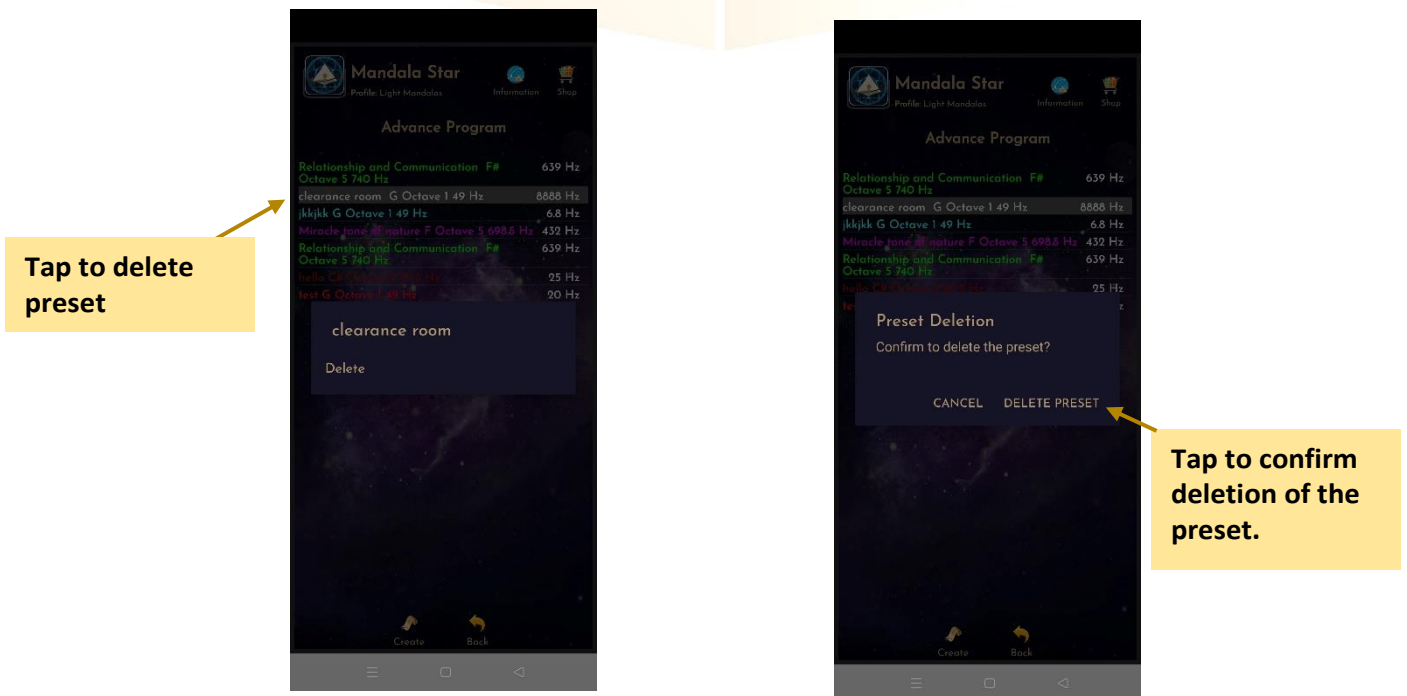
Tap on **Advance Preset** and it will bring you to **Advance Preset Home Page**.



Users can manually create/customize their own presets by tab on **Create Preset**. When the user is done with the preset pattern setup, tap on **Confirm** to save it.

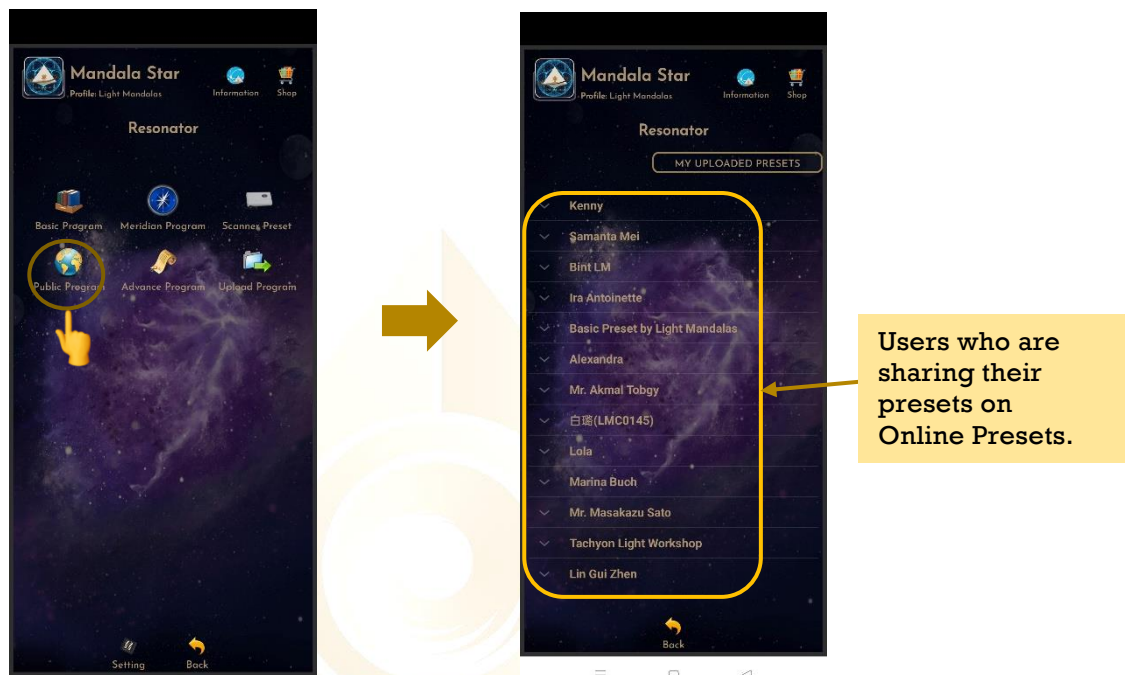


For deleting the preset you uploaded, tap on a preset you would like to delete, then tap **Delete Preset**.

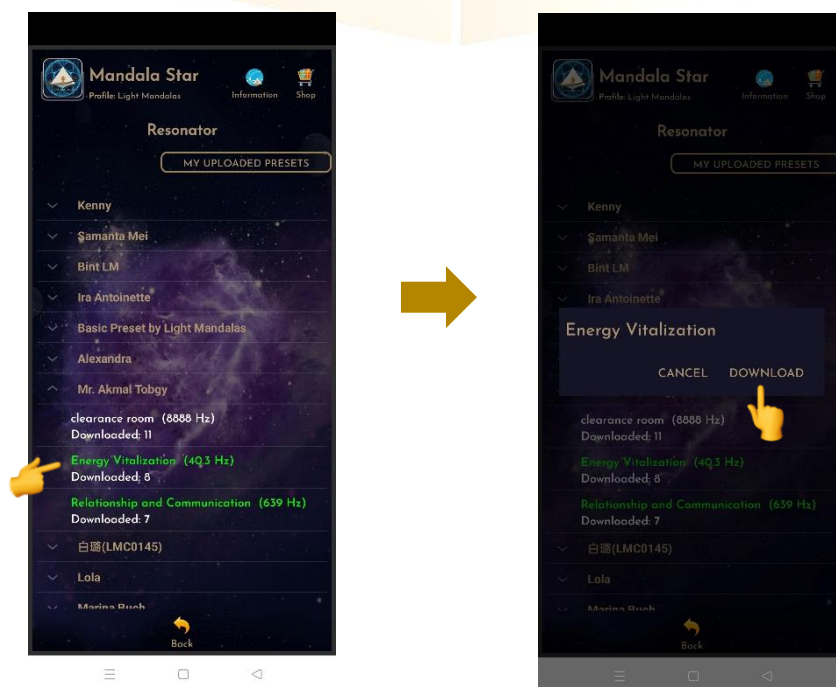


6.3 Public Presets

Users can download presets shared by other users in Public Presets mode. Users can also upload their preset online and share with other Light Mandalas users.

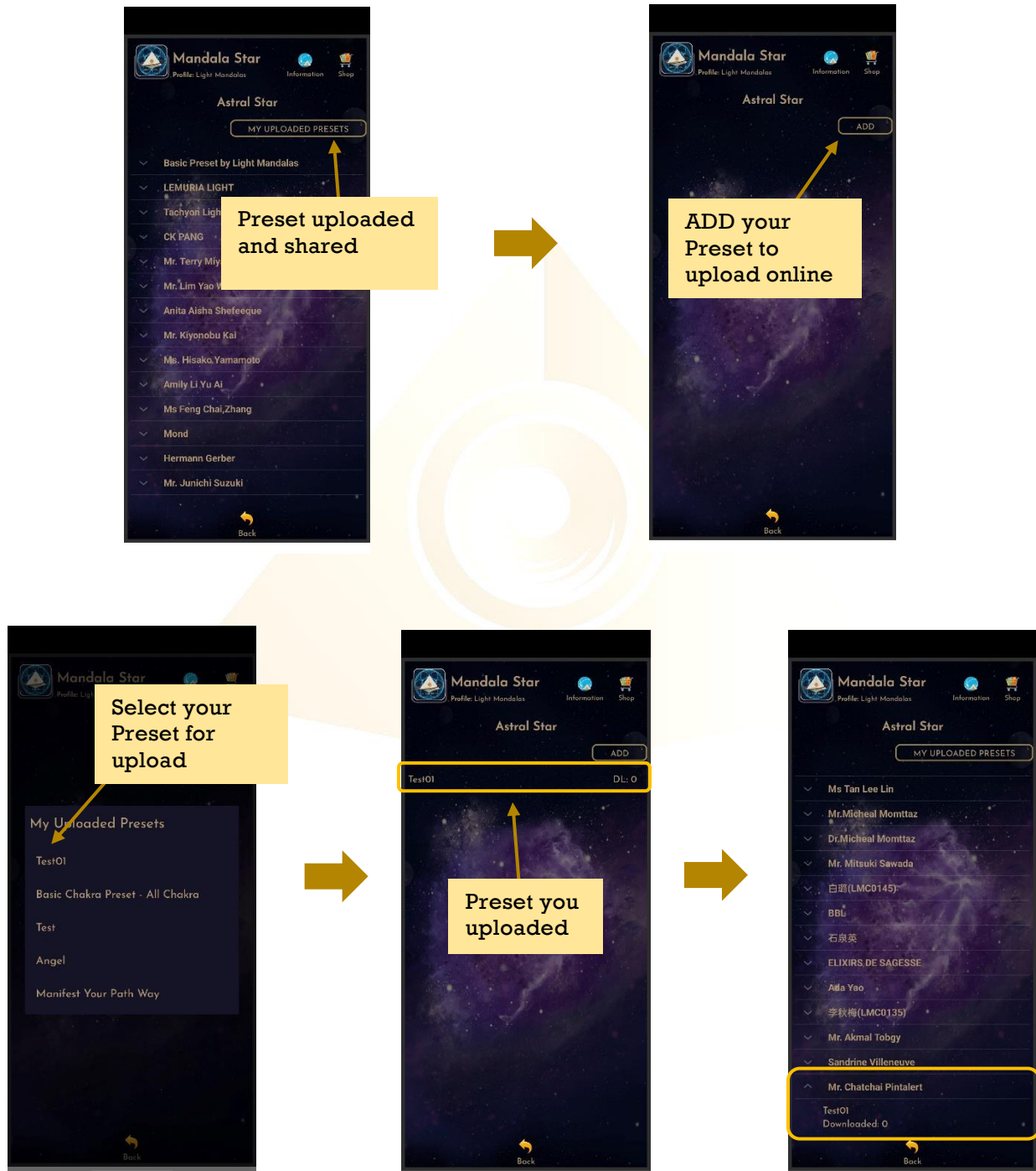


To download the online preset, tap on the user's name to see what presets they are sharing. Then tap on the preset you want to download and choose **Download**.

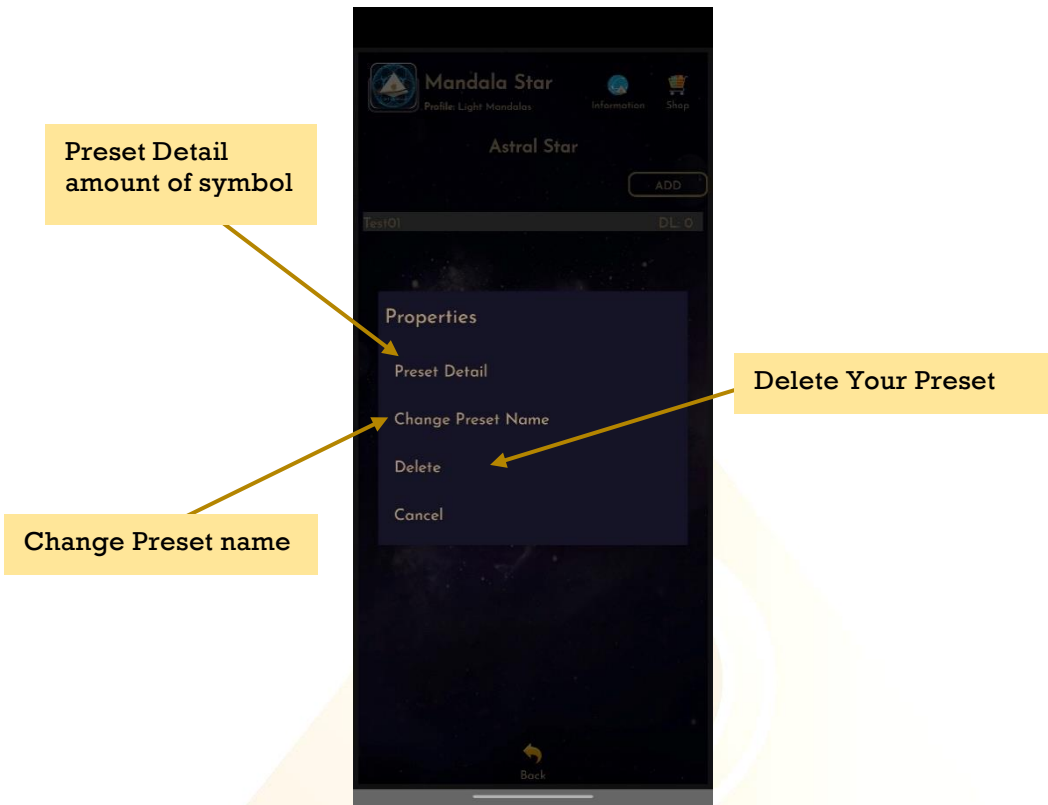


a. Upload presets

For upload preset, tap on **My Shared Presets**, then tap on **Add** and choose the preset you wish to upload from the presets you have created earlier.

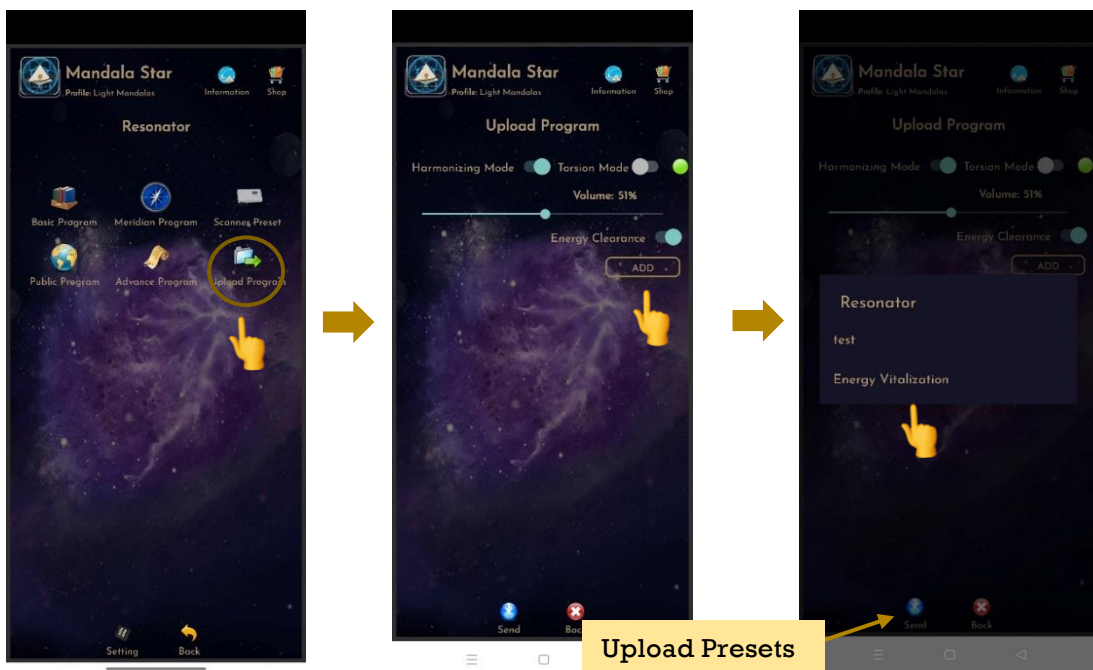


For delete the shared preset, tap on the preset and choose **Delete**.

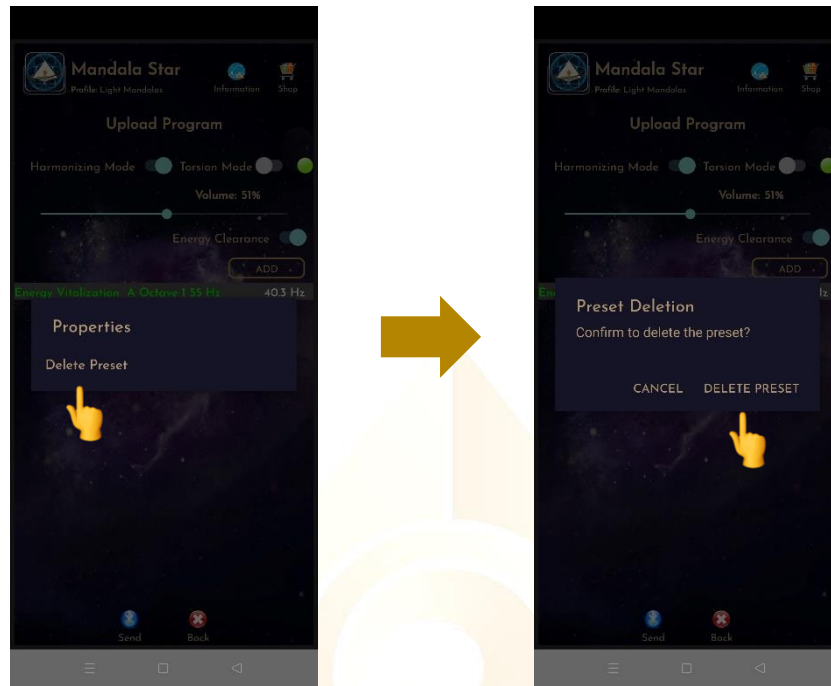


6.4 Upload Program

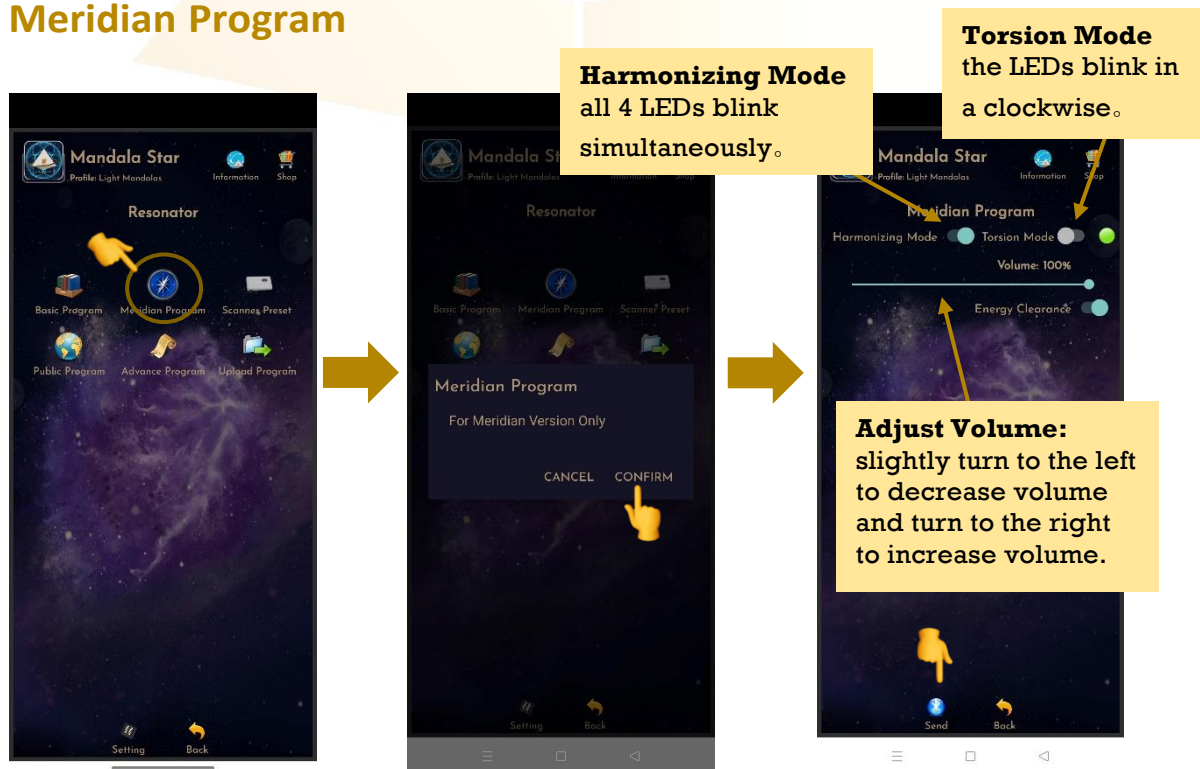
Users can add the frequency presets from **Download Preset**, **Scanned Preset**, and any created presets to combine and play together in the **Upload Programs**. After users added the presets, then click **Send** to upload to Resonator.



For delete the shared preset, tap, and hold on the preset then select **Delete Preset**.



6.5 Meridian Program



Application Reference

i. Program support for symptoms and issues.

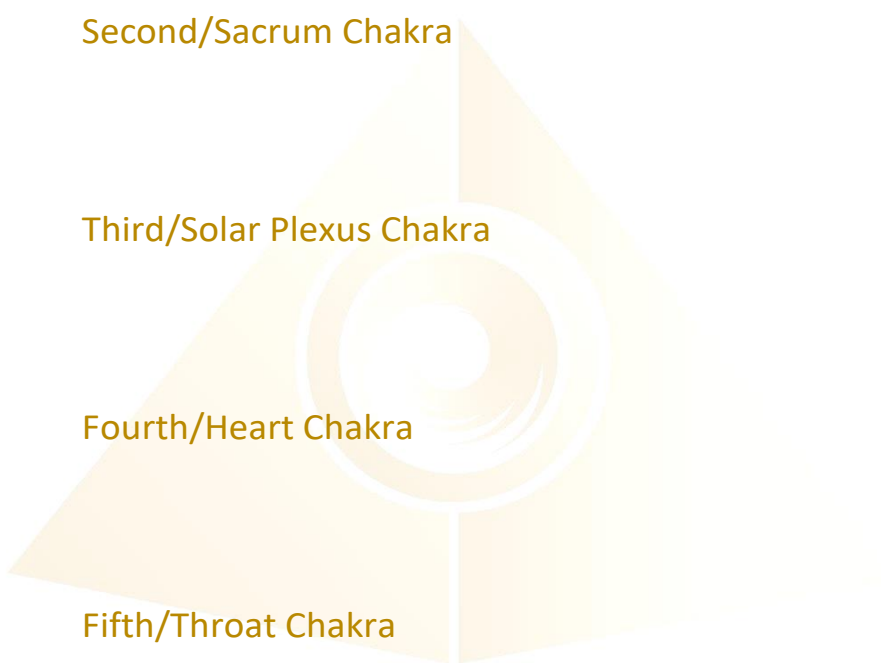
Program No.1	For skin and hair problems
Program No.2	Problems with the skin, bones, blood -mineral metabolism, musculoskeletal system
Program No.3	Improvement of microcirculation
Program No.4	Cleaning of the body
Program No.5	Improvement of digestion (initially)
Program No.6	Improvement of digestion (the final stages)
Program No.7	In case of problems with menstruation
Program No.8	Harmonization on the midrange
Program No.9	Water-salt metabolism, acid-base balance
Program No.10	Intestinal peristalsis (constipation)
Program No.11	Tracheo-bronchial drainage
Program No.12	Immunomodulation
Program No.13	Problems of neuro-endocrine regulation
Program No.14	Severe pain, eye problems, hearing
Program No.15	Harmonization at high frequencies

ii. Specific time of Application

Program No.1	7pm-9pm, 11pm-3am.
Program No.2	5am,7am,9am,11am,1pm,3pm,5pm,7pm,9pm
Program No.3	11am-1pm, 5pm-7pm, 3am-5am
Program No.4	5pm-7pm, 1am-3am, 5am-7am
Program No.5	7am-9am, 1pm-3pm, 7pm-9pm, 11pm-3am
Program No.6	7am-9am, 1pm-3pm, 7pm-9pm, 11pm-3am
Program No.7	5am-7am, 9am-11am, 11am-1pm, 9pm-11pm
Program No.8	8am,10am,12pm,2pm,4pm,6pm,8pm,10pm
Program No.9	5am-7am, 9am-11am, 11am-1pm, 9pm-11pm
Program No.10	5pm-7pm, 1pm-3pm, 5pm-7pm,11pm-3am
Program No.11	3am-5am,5am-7am, 9am-11am,5pm-7pm
Program No.12	5am-7am, 9am-11am,3am-5am
Program No.13	7pm-9pm, 11pm
Program No.14	7pm-9pm, 11am-1pm
Program No.15	9pm-12am, 1am-4am

iii. Chakra Application

Program No.1	First/Root Chakra
Program No.2	
Program No.3	Second/Sacrum Chakra
Program No.4	
Program No.5	Third/Solar Plexus Chakra
Program No.6	
Program No.7	Fourth/Heart Chakra
Program No.8	
Program No.9	Fifth/Throat Chakra
Program No.10	
Program No.11	Sixth/Third Eye Chakra
Program No.12	
Program No.13	Seventh/Crown Chakra
Program No.14	
Program No.15	Soul Star & All Chakra



iv. Application on the time for Maximum Organs Energy

Liver	1 am-3 am
Lungs	3am-5am
Large Intestine	5am-7am
Stomach	7am-9am
Spleen	9am-11am
Heart	11am-1pm
Small Intestine	1pm-3pm
Bladder	3pm-5pm
Kidneys	5pm-7pm
Vessels (Veins & Arteries) Pancreases	7pm-9pm
Endocrine and Reproductive Organs	9pm-11pm
Gallbladder	11pm-1am

Disclaimer

All content found on the Light-mandalas.com Website, Facebook Page, YouTube, including: text, images, video, audio, or other formats are intended for informational, educational and research purposes only and neither Light Mandalas Co. Ltd. nor the publishers of this content take responsibility for possible health consequences of any person or persons reading or following the information in this educational content and is not intended to be a substitute for professional medical advice, diagnosis, treatment or cure. Always seek the advice of your physician or other qualified health professionals with any questions you may have regarding a medical condition.

“No claims other than stress detection and stress reduction may be made”

Light Mandalas products are to be used as a Heart Rate Variability Biofeedback system and Light, Color and Sound therapy, designed for stress detection and stress reduction only. The devices do not evaluate any issue other than stress. Stress can come from many sources; this system uses light and color and sound therapies to reduce stress. Remember, there has never been any reported side effects using light, color and sound therapy anywhere in the world and throughout time.

Notes on the practices of low-level laser therapy (LLLT) and Biofeedback

Low-level laser therapy (LLLT) is considered investigational by the FDA, and no medical claims of cures are permitted in the US; at this time however, low-level lasers are defined within the scope of complimentary medical practices such as physiotherapy, aesthetic, Traditional Chinese Medicine and acupuncture, etc.

The FDA does not regulate Bio resonance tools but they do regulate biofeedback tools and some Bio resonance tools are registered under this category.

*It is a legal requirement at this time that the user does not make any medical claims of diagnosis or cure.

Precaution

Light Mandalas products are working on energetic level. The standard benefit is energy clearance. During the process, your body and mind can be uncomfortable. The symptoms associated with overly rapid clearance of toxins. If those detox symptoms are too strong, you may need to stop using the products. You have to allow the clearance or detox to proceed and you can start to try the products afterwards. However, if the issues still remain the same, it may need to be completely discontinued for your own safety

Shall there be any inquiry, please contact us for further support.

Light Mandalas Co., Ltd. (Thailand Headquarters):

- **Light Mandalas Website:** www.light-mandalas.com
- **Official:** info@light-mandalas.com
- **Instagram:** [@mandalawave9](https://www.instagram.com/mandalawave9)
- **YouTube Channel:** Light Mandalas Official
- **Technical Support Email:** cservice@light-mandalas.com

Local agents contacts:

- **Japan:** japan@light-mandalas.com
- **Taiwan:** lovelight777888@gmail.com
- **Indonesia:** lightseed2020bali@gmail.com
- **West Malaysia:** lightworker@healingtech.org
- **East Malaysia:** malaysia@light-mandalas.com
- **Hungary:** horesnyibela@light-mandalas.com
- **Switzerland, Germany, Austria, and the Netherlands:** info@light-mandalas.ch
- **France, Spain:** france-spain@light-mandalas.com
- **USA:** usa@light-mandalas.com
- **New Zealand, Australia:** tachyonhealing.nz@gmail.com